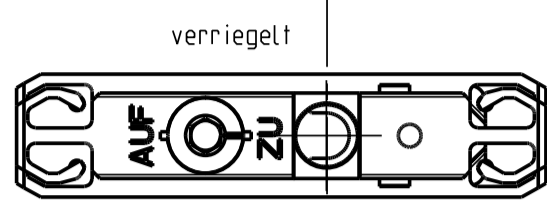
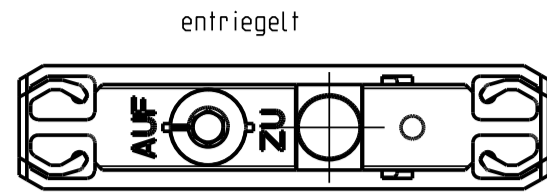


Verriegelung des Scherenbolzens durch Inbusschlüssel SW 4. Um sichere Verriegelung zu prüfen, kräftig am Scherenarm ziehen.



Schema A
Schiebeflügel/Festverglasung

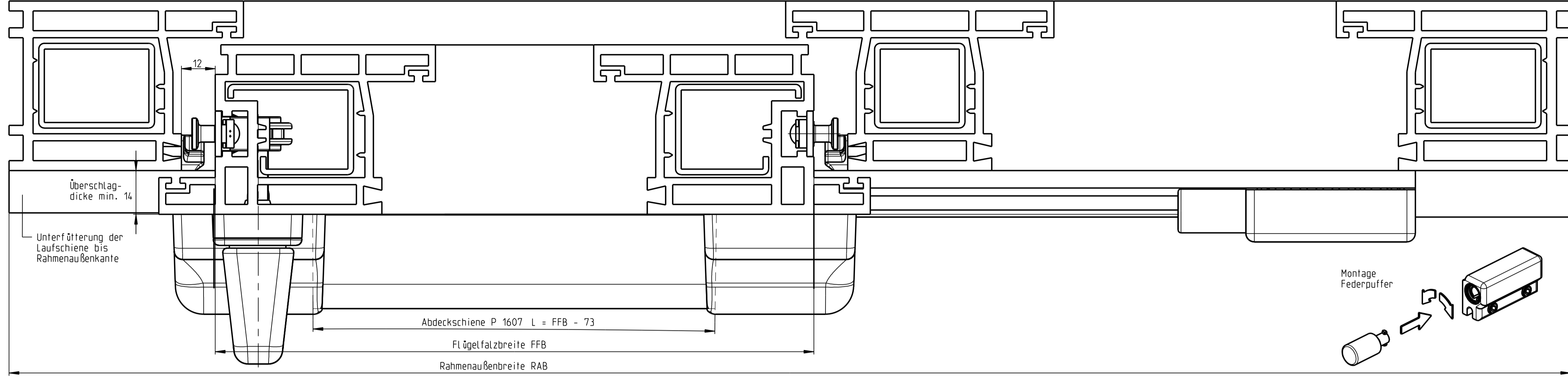
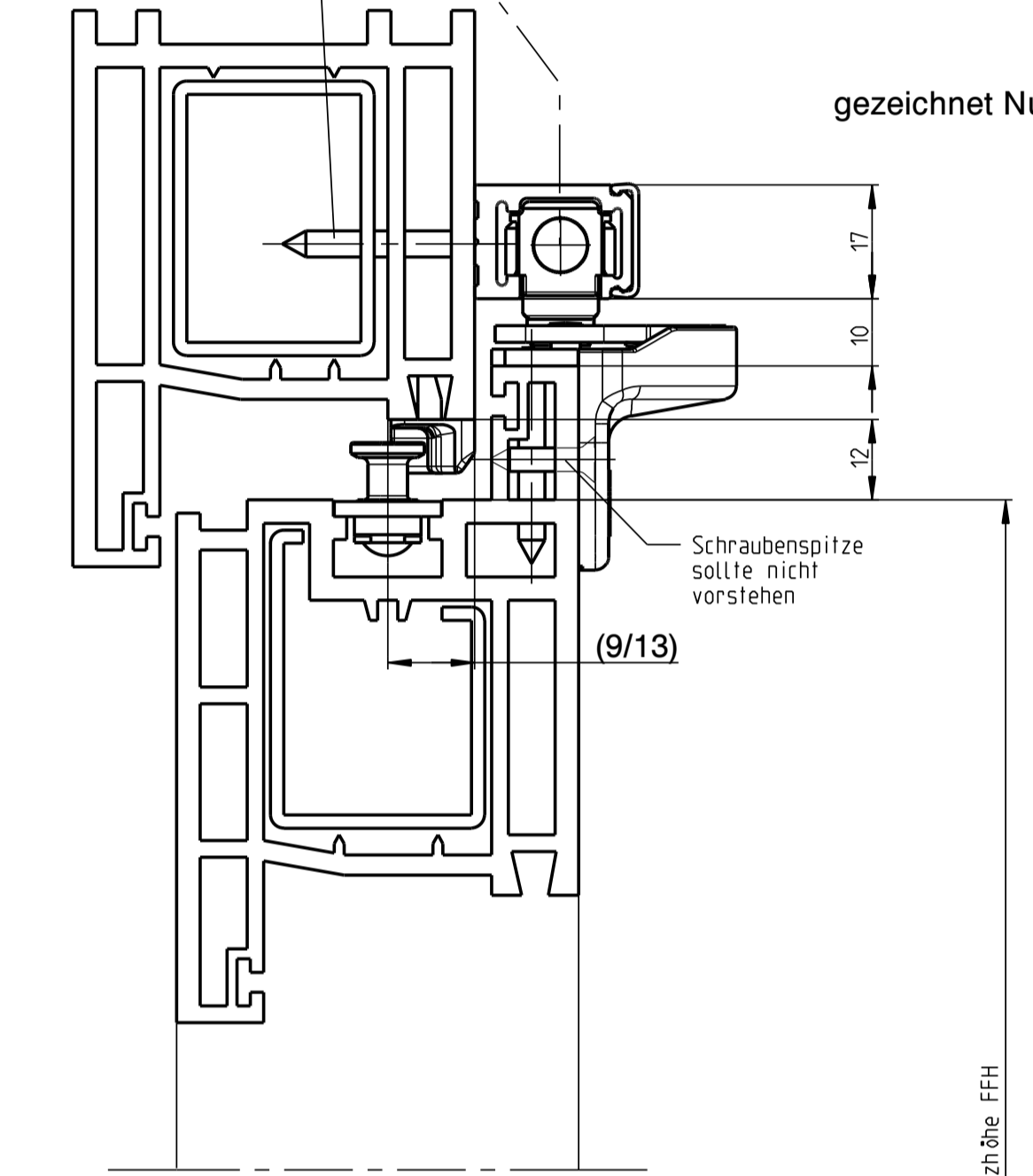
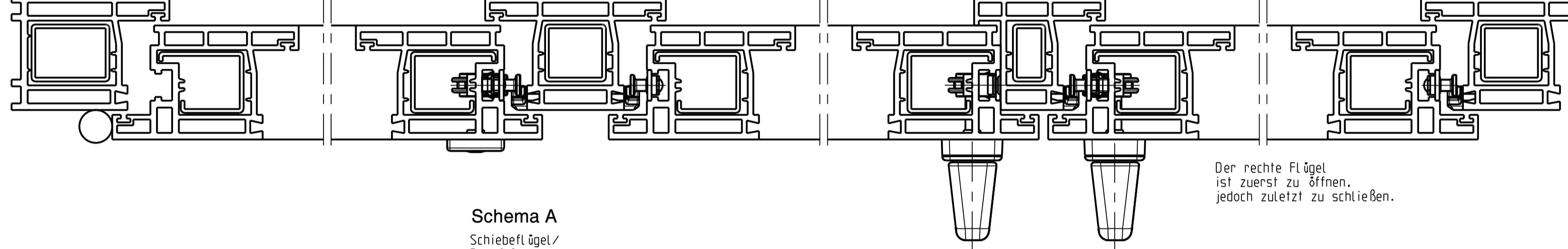


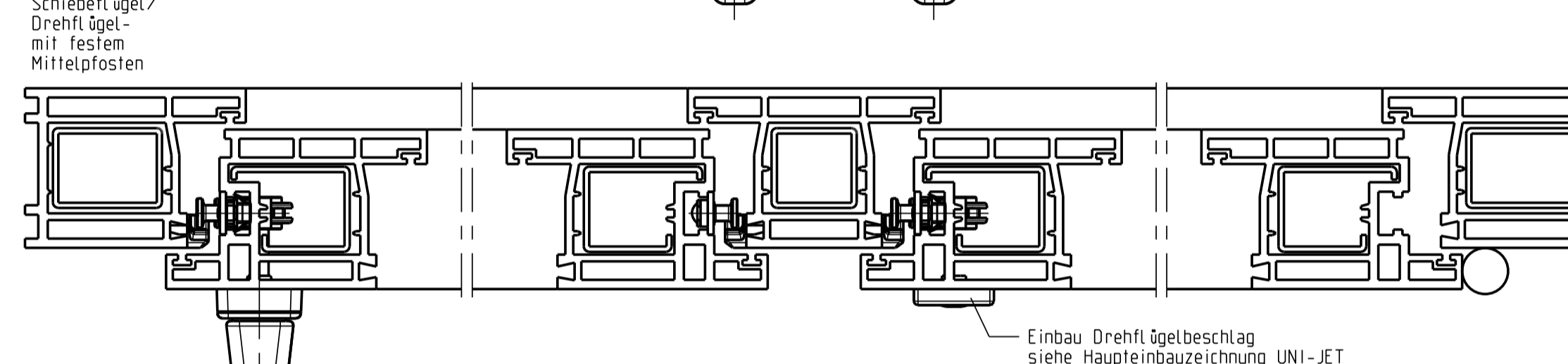
Abbildung Pos. 6
Senkblechschraube 3,9x...



Schema C
mit seitlichen Drehflügeln

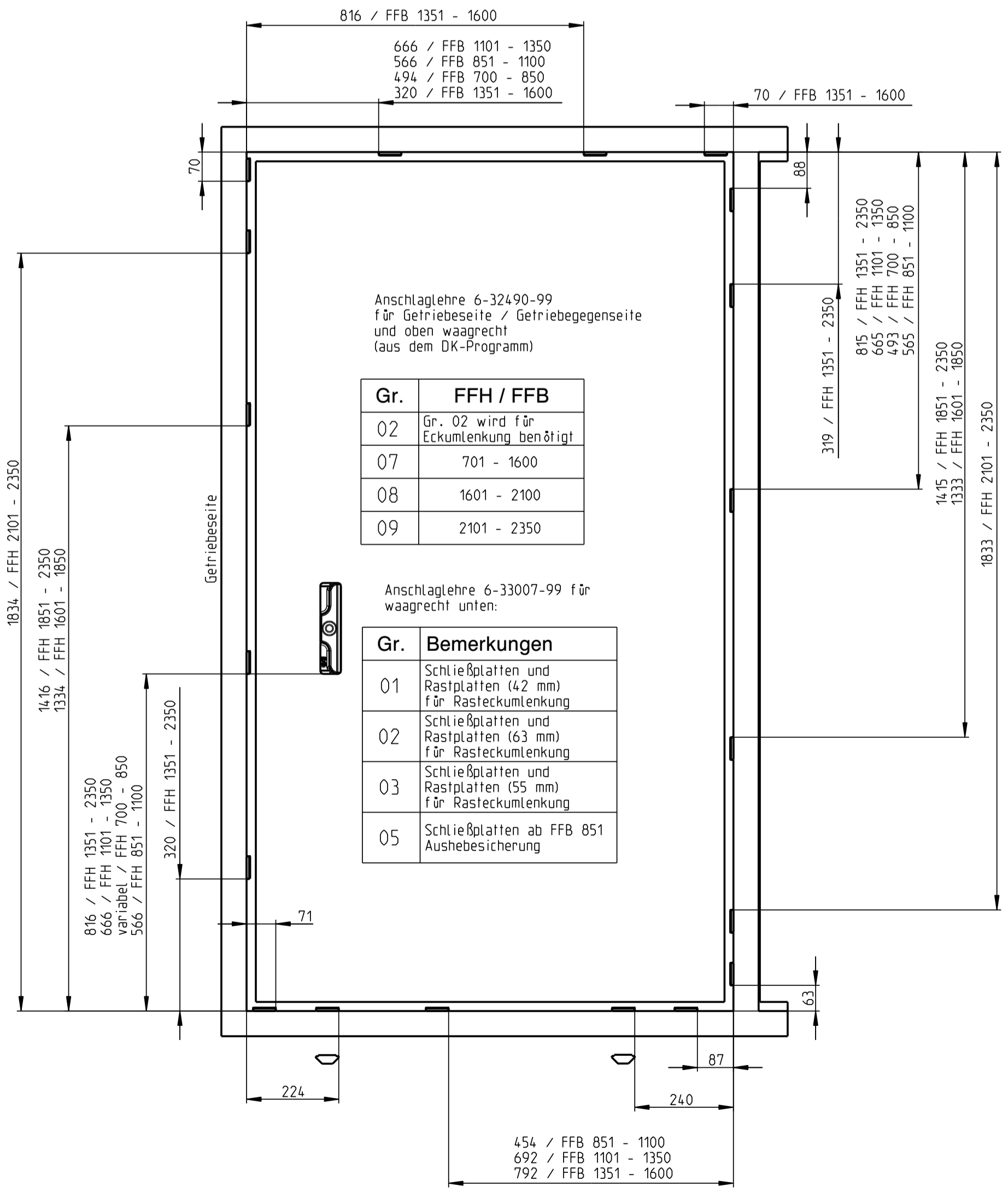
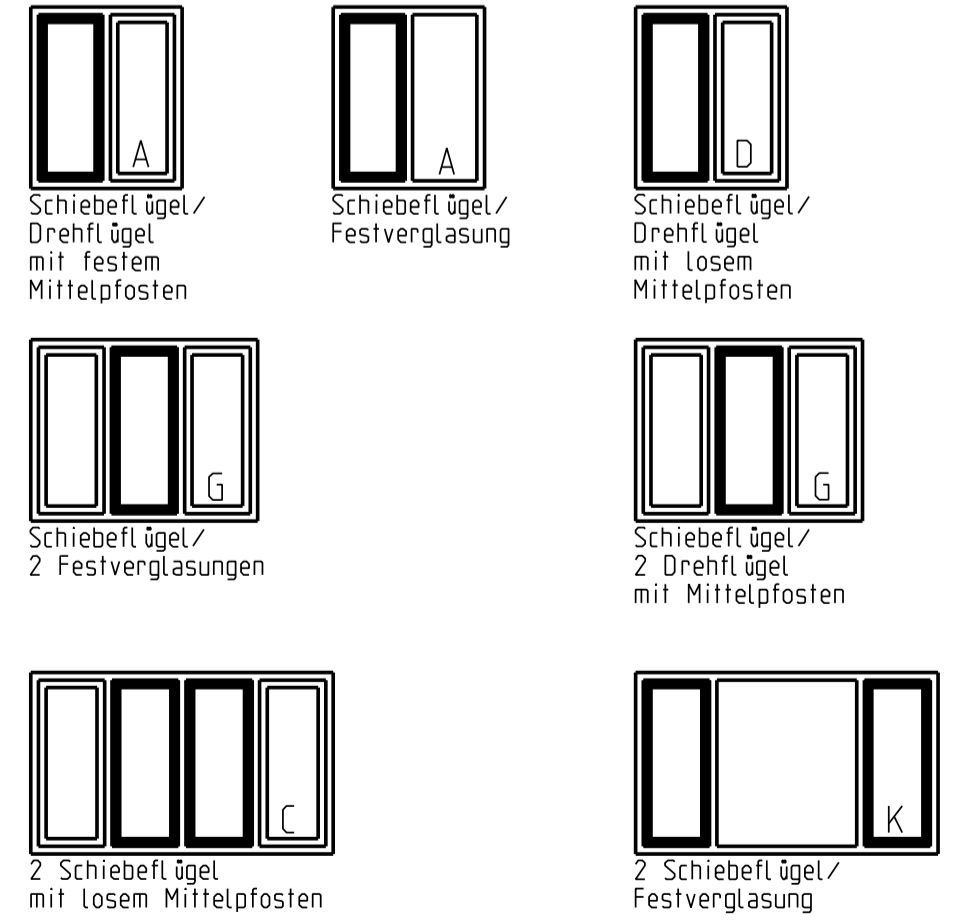
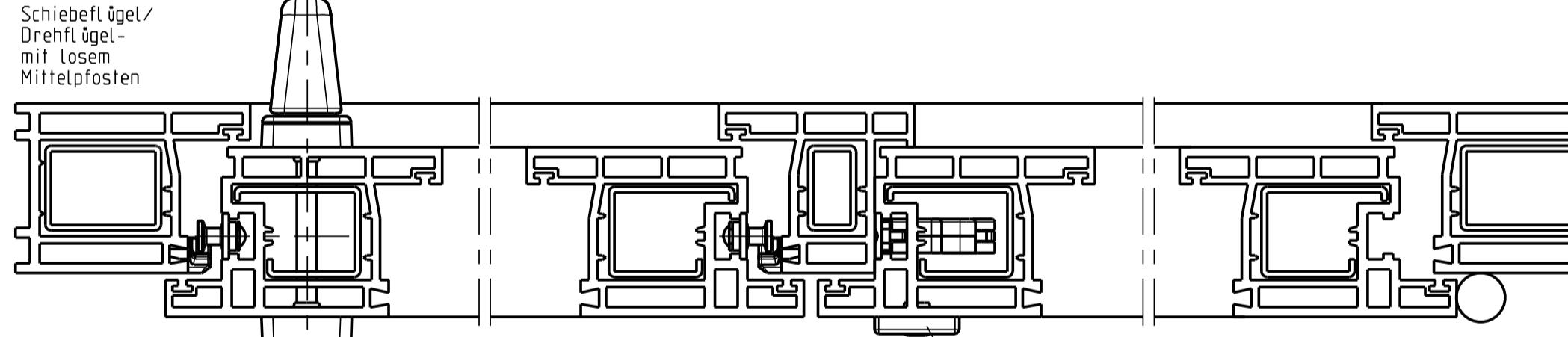


Schema A
Schiebeflügel/
Drehflügel/
mit festem
Mittelposten

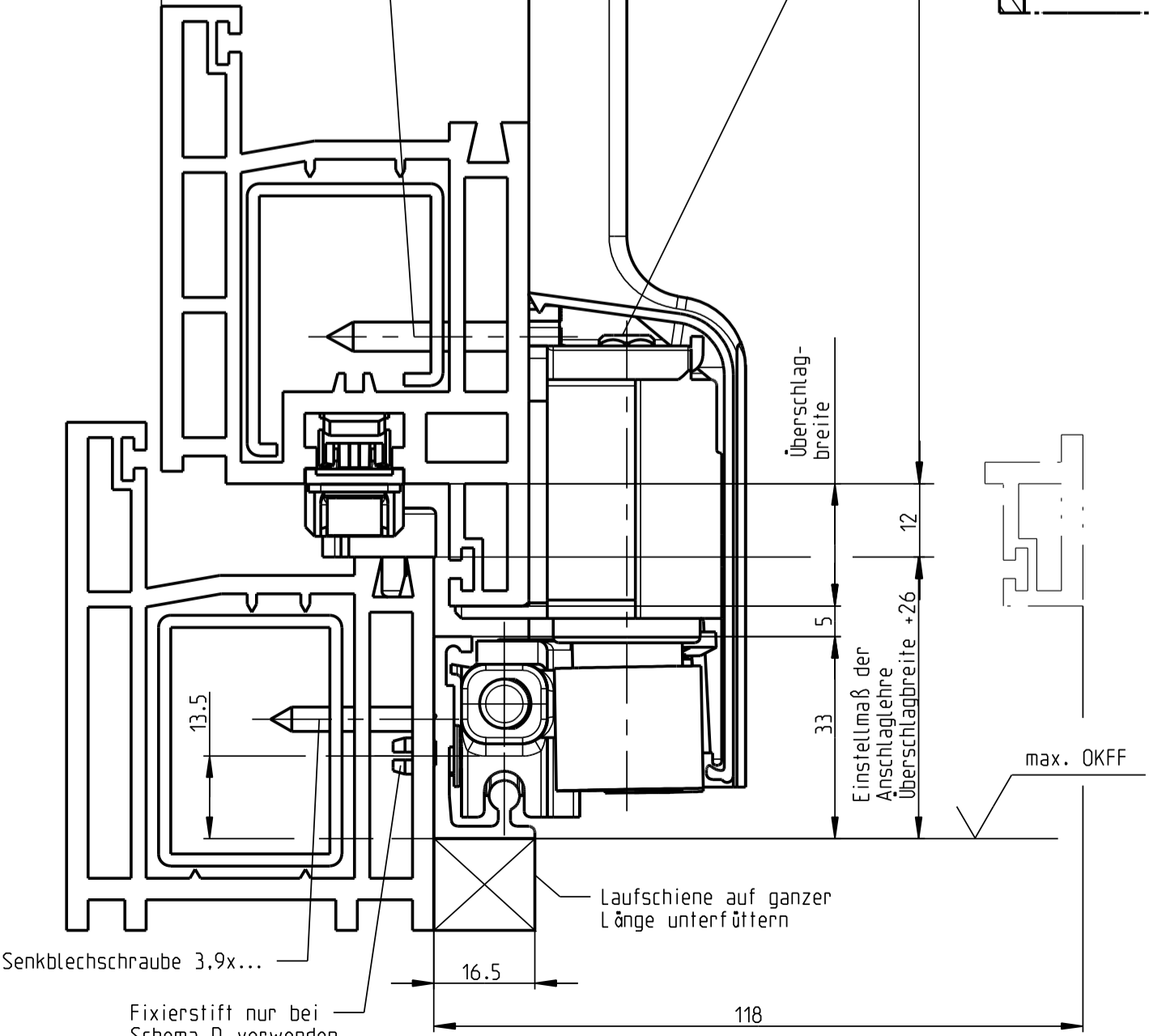


- Wunschteile:**
- Drehgriff Dirigent außen 20 mm hoch 6-25223
 - Drehgriff Dirigent außen 30 mm hoch 6-28060

Schema D
Schiebeflügel/
Drehflügel/
mit losem
Mittelposten

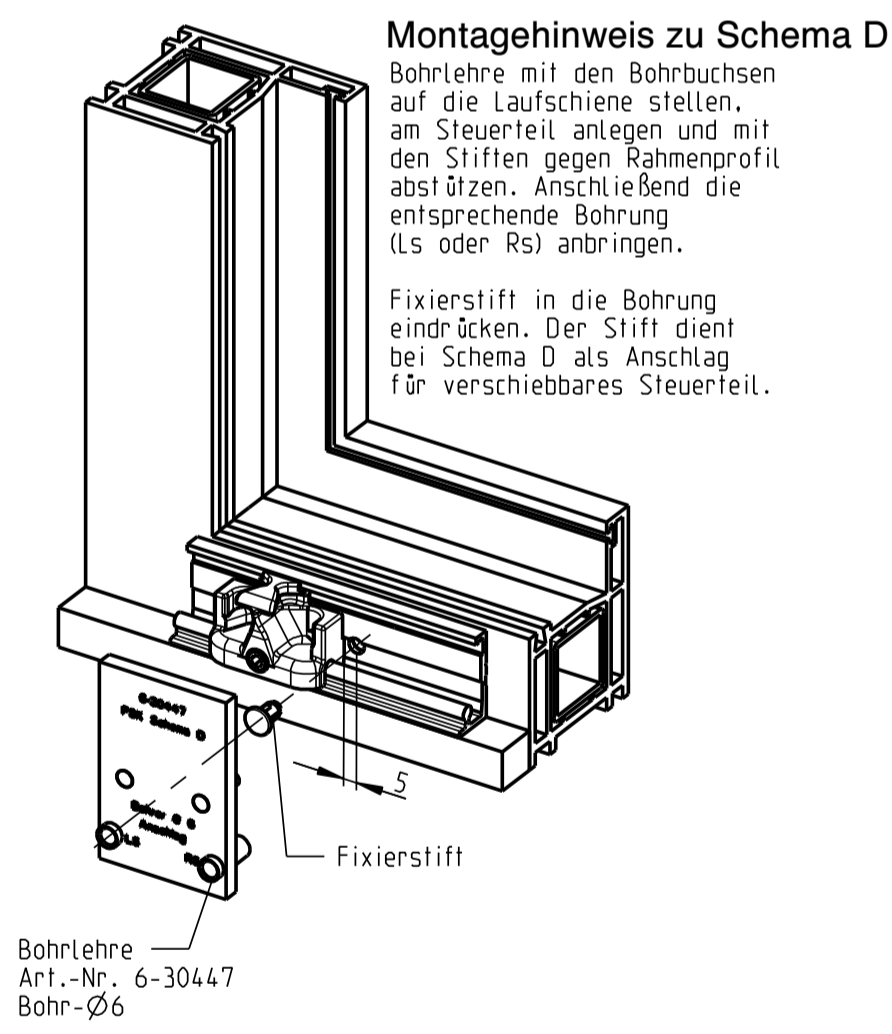
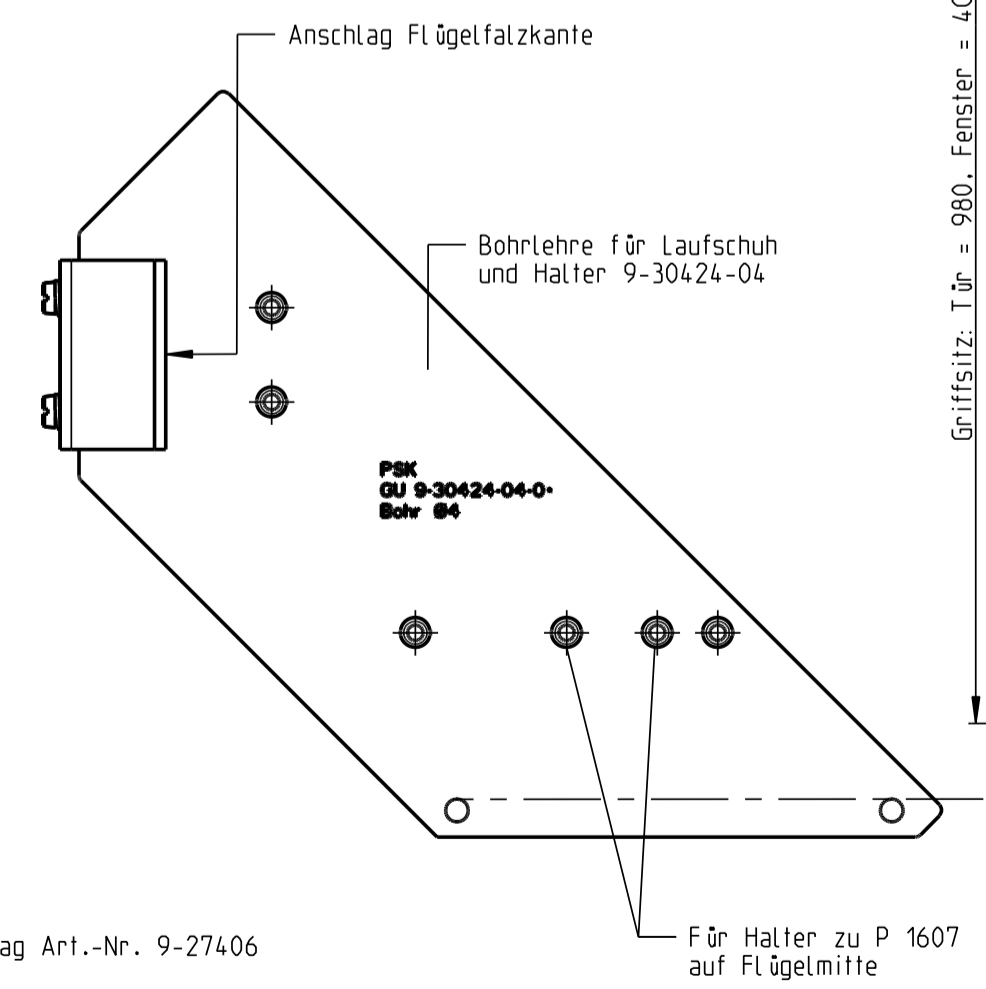
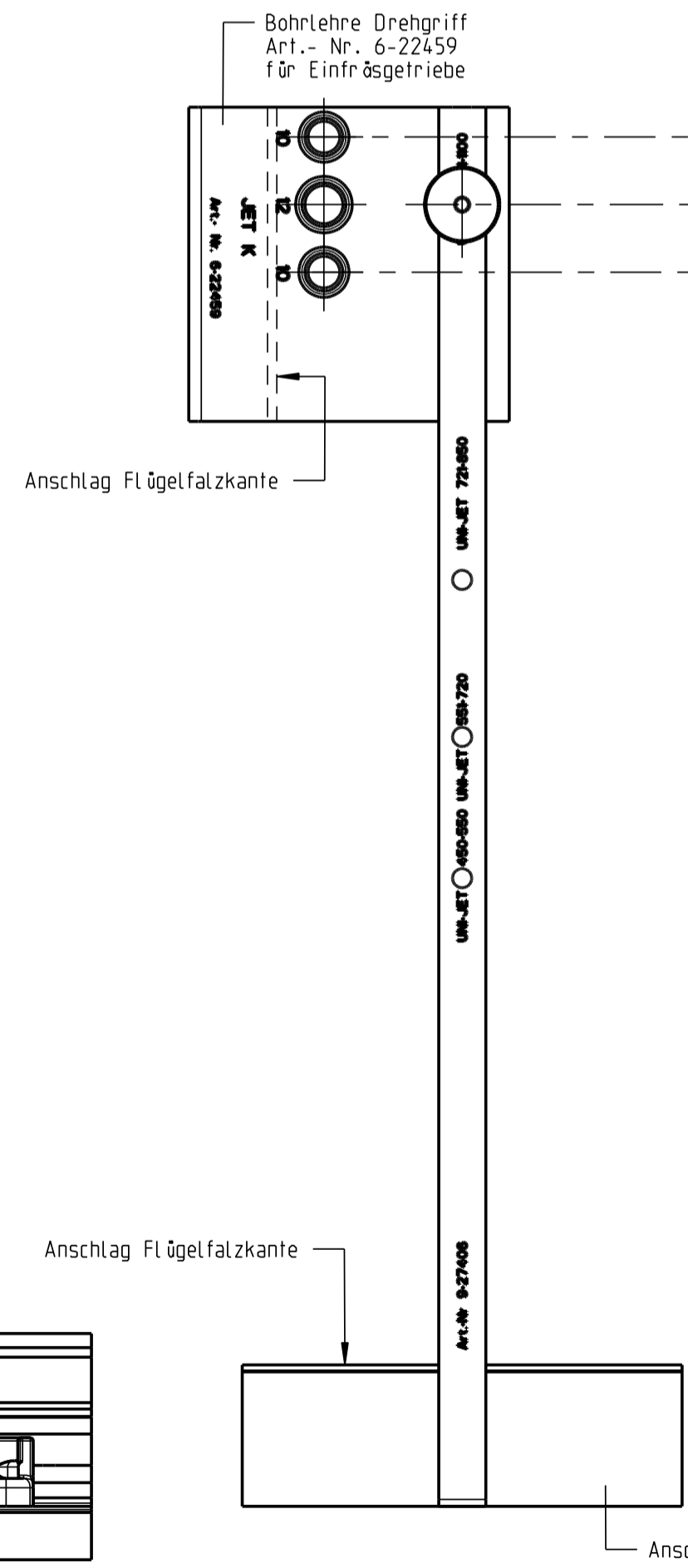
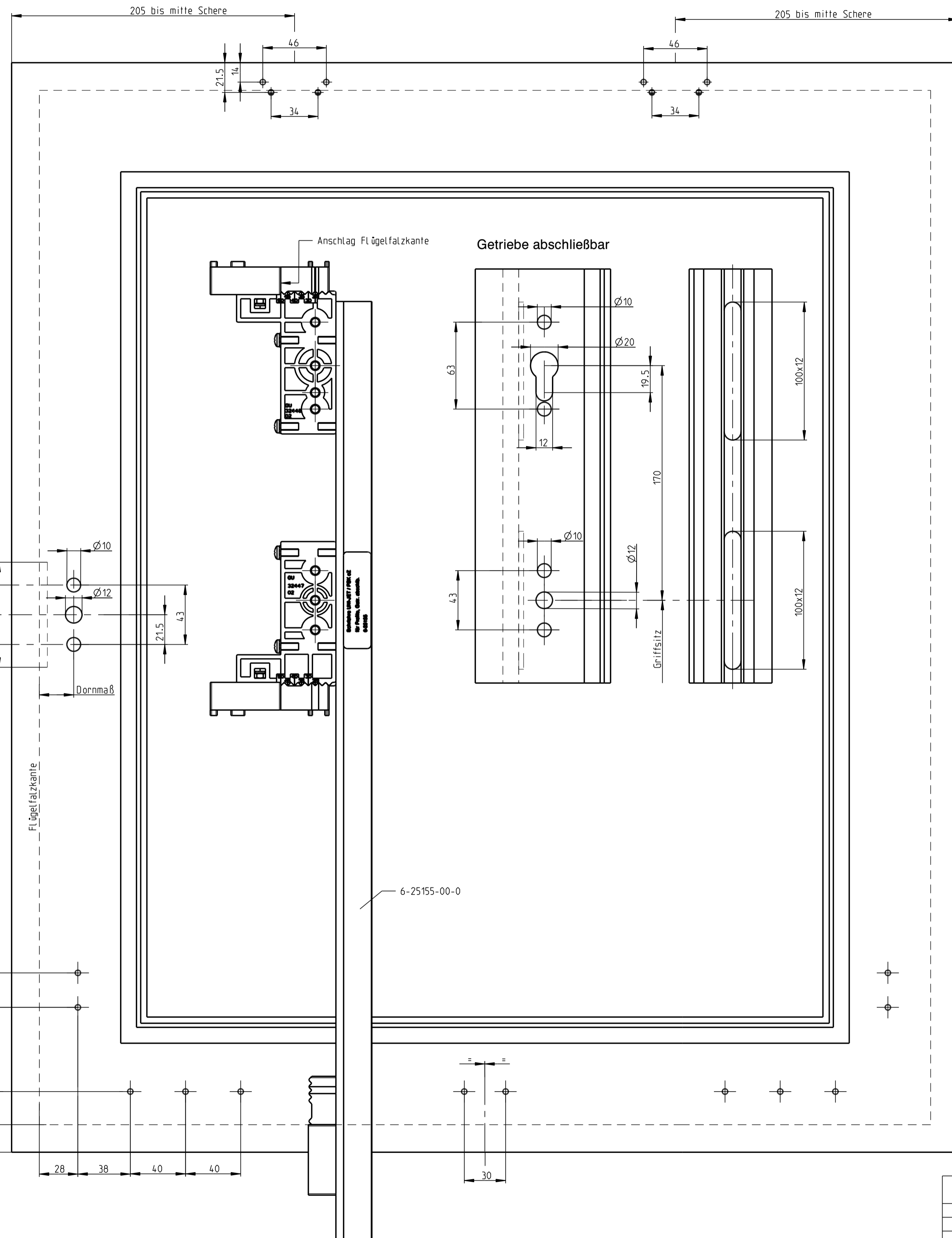
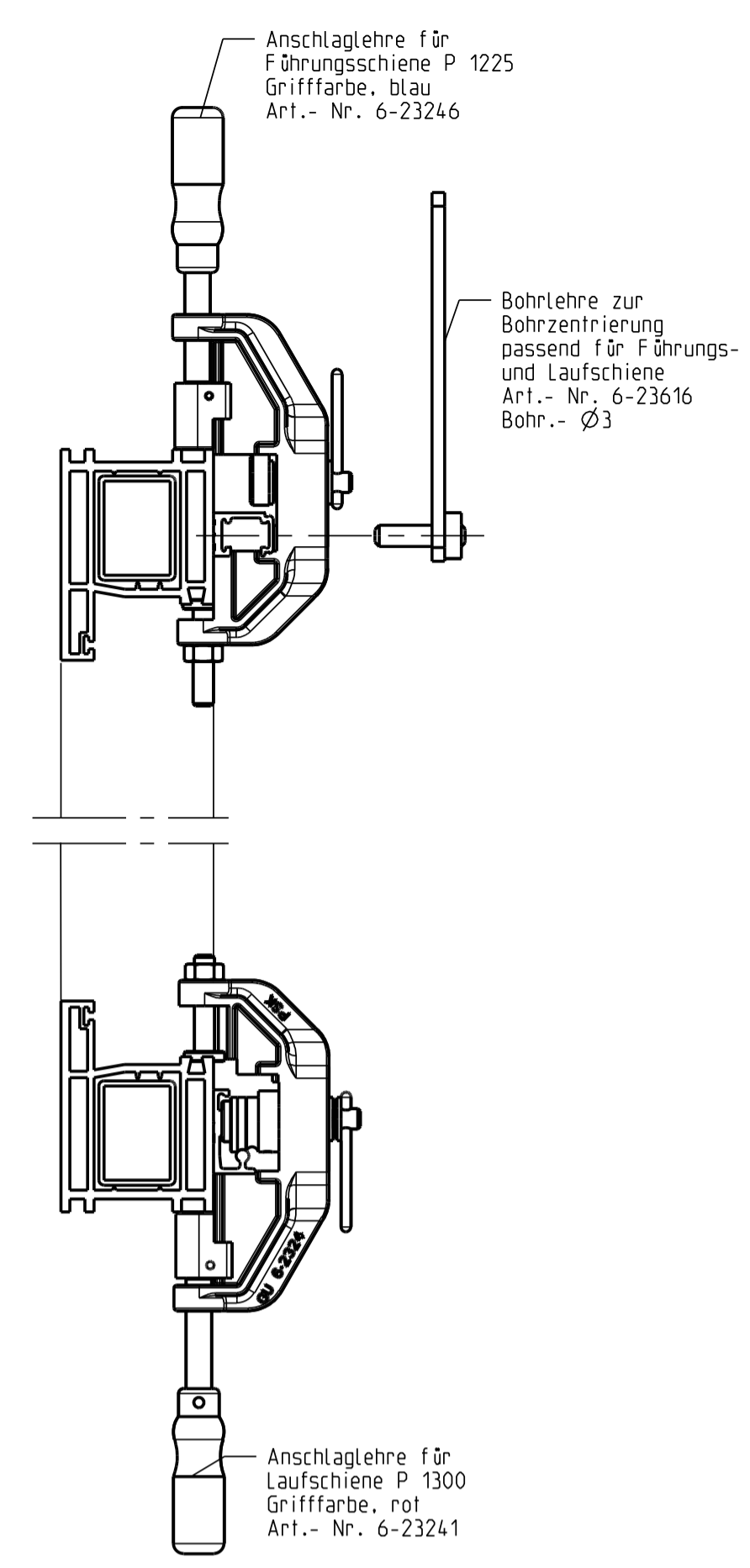
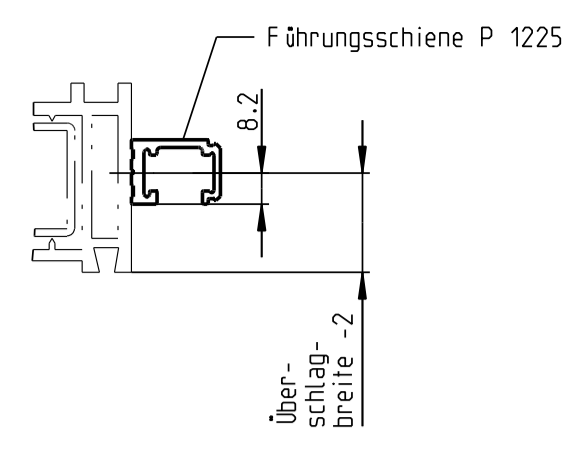
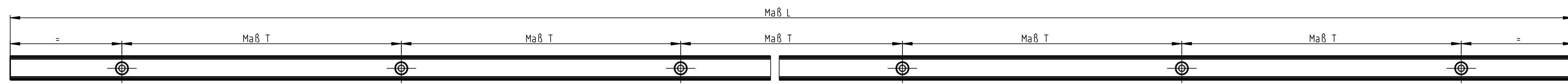


Linsensblechschraube 4,8x...

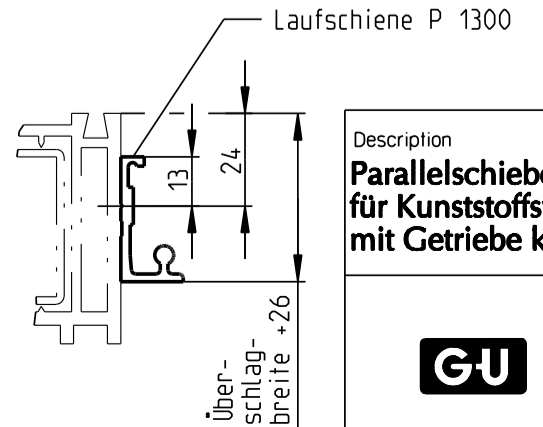


Description
Parallelschiebe-Kippbeschlag GU-966/150 oZ für Kunststoffsysteme, Nutlage 9/13mm mit Getriebe konstant, Dornmaß 15 mm

Release No.	Level	Released	Scale	Modification	Size
Mod. No. G25928	Ver.	Draft	04.11.04	Zv	1
Replacement for 0-43923-BL					Sheet
Drawing No. 0-44384-BL-0-0					2/3

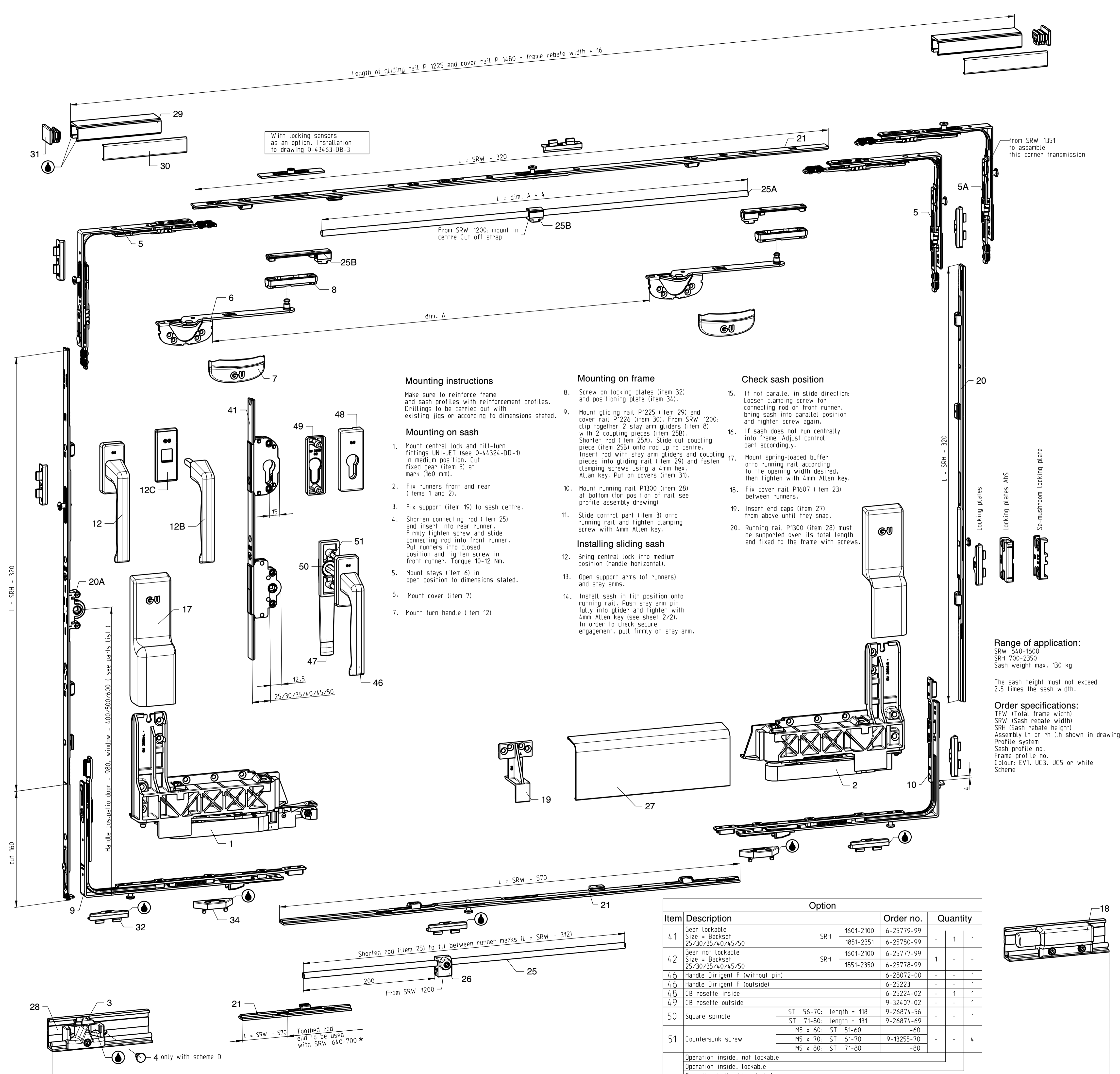


Gr.	FFB	Maß L	Anzahl der Schraublöcher	Teilung / Maß T	Verwendung
20	600-850	1960	10	200	Führungs- P 1225 und Laufschiene P 1300
25	851-1100	2460	13		
30	1101-1350	2960	15		
35	1351-1600	3460	18		
67	Lagerlänge	6700	34		



Description
Parallelschiebe-Kippbeschlag GU-966/150 oZ für Kunststoffsysteme, Nutlage 9/13mm mit Getriebe konstant, Dommaß 15 mm

Release No.	Level	Released	Scale	Modification	Size
Mod. No. G25928	Ver. --	06.11.08	6	%	1
Replacement for --			Drawing No. 0-44384-BL-0-0		Sheet 3/3



With locking sensors as an option. Installation to drawing 0-43463-08-3

L = SRW - 320

L = dim. A + 4

From SRW 1200: mount in centre Cut off strap

from SRW 1351 to assemble this corner transmission

Mounting instructions

Make sure to reinforce frame and sash profiles with reinforcement profiles. Drillings to be carried out with existing jigs or according to dimensions stated.

Mounting on sash

1. Mount central lock and tilt-turn fittings UNI-JET (see 0-44324-DD-1) in medium position. Cut fixed gear (item 5) at mark (360 mm).
2. Fix runners front and rear (items 1 and 2).
3. Fix support (item 19) to sash centre.
4. Shorten connecting rod (item 25) and insert into rear runner. Firmly tighten screw and slide connecting rod into front runner. Put runners into closed position and tighten screw in front runner. Torque 10-12 Nm.
5. Mount stays (item 6) in open position to dimensions stated.
6. Mount cover (item 7)
7. Mount turn handle (item 12)

Mounting on frame

8. Screw on locking plates (item 32) and positioning plate (item 34).
9. Mount gliding rail P1225 (item 29) and cover rail P1226 (item 30). From SRW 1200: with 2 coupling pieces (item 25B). Shorten rod (item 25A). Slide cut coupling piece (item 25B) onto rod up to centre. Insert rod with stay arm gliders and coupling pieces into gliding rail (item 29) and fasten clamping screws using a 4mm hex. Allen key. Put on covers (item 31).
10. Mount running rail P1300 (item 28) at bottom (for position of rail see profile assembly drawing)
11. Slide control part (item 3) onto running rail and tighten clamping screw with 4mm Allen key.

Installing sliding sash

12. Bring central lock into medium position (handle horizontal).
13. Open support arms (of runners) and stay arms.
14. Install sash in tilt position onto running rail. Push stay arm pin fully into glider and tighten with 4mm Allen key (see sheet 2/2). In order to check secure engagement, pull firmly on stay arm.

Check sash position

15. If not parallel in slide direction: Loosen clamping screw for connecting rod on front runner, bring sash into parallel position and tighten screw again.
16. If sash does not run centrally into frame: Adjust control part accordingly.
17. Mount spring-loaded buffer onto running rail according to the opening width desired, then tighten with 4mm Allen key.
18. Fix cover rail P1607 (item 23) between runners.
19. Insert end caps (item 27) from above until they snap.
20. Running rail P1300 (item 28) must be supported over its total length and fixed to the frame with screws.

Range of application:
SRW 640-1600
SRH 700-2350
Sash weight max. 130 kg

The sash height must not exceed 2.5 times the sash width.

Order specifications:
TFW (Total frame width)
SRW (Sash rebate width)
SRH (Sash rebate height)
Assembly lh or rh (lh shown in drawing)
Profile system
Sash profile no.
Frame profile no.
Colour: EV1, UC3, UC5 or white Scheme

Item	Description	Option	Order no.	Quantity
41	Gear lockable	SRH 1601-2100	6-25779-99	- 1 1
	Size = Backset	25/30/35/40/45/50	1851-2351	6-25780-99
42	Gear not lockable	SRH 1601-2100	6-25777-99	1 - -
	Size = Backset	25/30/35/40/45/50	1851-2350	6-25778-99
46	Handle Dirigent F (without pin)		6-28072-00	- - 1
46	Handle Dirigent F (outside)		6-25223	- - 1
48	CB rosette inside		6-25224-02	- 1 1
49	CB rosette outside		9-32407-02	- - 1
50	Square spindle	ST 56-70: Length = 118	9-26874-56	- - 1
		ST 71-80: Length = 131	9-26874-69	- - 1
51	Countersunk screw	M5 x 60: ST 51-60	-60	- - 4
		M5 x 70: ST 61-70	9-13255-70	- - 4
		M5 x 80: ST 71-80	-80	- - 4

Length of running rail P 1300 = frame rebate width + 16

Item	Description	Order no.	Qty. per scheme				
			A	C	D	G	K
1	Runner front lh	6-32544	1	1	1	1	1
2	Runner rear lh	6-29559	1	1	1	1	1
3	Control part	6-33329	1	2	1	1	2
4	Fixing pin only scheme D	9-39897	-	-	1	-	-
5	Corner transmission	SRW 640-1350	6-32021	2	4	2	2
5A		1351-1600	6-32021	1	2	1	1
6	Stay GU-90 oZ	6-31753	2	4	2	2	4
7	Cover for stay arm GU-90 oZ	9-42435	2	4	2	2	4
8	Stay arm glider	6-22755	2	4	2	2	4
9	Corner transmission front	6-32918	1	2	1	1	2
10	Corner transmission rear	6-32919	1	2	1	1	2
12	Handle Dirigent F (for window)	6-28072-99	1	2	1	1	2
12B	Handle Dirigent F removable	8-00694	-	-	-	-	-
12C	Rosette for side hung sash	6-24913	1	2	1	2	-
17	End cap 1 pair (lh/rh)	9-38542-LR	2	4	2	2	4
18	Spring-loaded buffer	6-29565	1	2	1	1	2
19	Support	9-38522	1	2	1	1	2
20	Centre gear vertical SRH 700-2350	SRH Length ML					
		700-850 530 1	6-32494-30				
		851-1100 780 1	6-32494-40				
		1101-1350 1030 1	6-32494-50				
		1351-1600 1280 2	6-32494-60				
		1601-1850 1530 3	6-32494-70				
		1851-2100 1780 3	6-32494-80				
		2101-2350 2030 4	6-32494-90				
20A	Variable gear	SRH Length ML Handle pos.					
		700-750 430 - 295-375 G-22081					
		751-850 880 - 375-600 G-22082					
		851-1100 940 1 400 G-22124					
		1101-1350 1190 500 G-22125					
		1351-1600 1440 2 600 G-22127					
		1601-1850 1690 3 600 G-22128					
		1851-2100 1940 3 980 G-22133					
		2101-2350 2190 4 980 G-22134					
21	Centre gear horizontal top SRW 640-1600	SRW Length ML					
		640-700 415 - 6-26741					
		701-850 530 - 6-32494-30					
		851-1100 780 1 6-32494-40					
		1101-1350 1030 1 6-32494-50					
		1351-1600 1280 2 6-32494-60					
			6-26741				
			6-26741				
			6-32494-35				
			6-32494-40				
			6-32494-50				
25	Rod ø8	SRW Length					
		640-850 600	9-25476-06				
		851-1100 850	9-25476-09				
		1101-1350 1100	9-25476-11				
		1351-1600 1350	9-25476-14				
25A	Rod ø8 from SRW 1200 for pos. 25B (Length as with item 25)		9-25476-99	1	2	1	1
25B	Closing pressure control (3 coupling pieces)		K-16784	1	2	1	1
26	Guide from SRW 1200		6-24764	1	2	1	1
27	Cover rail bottom P 1607	SRW Length					
		640-850 1035	9-38803-11				
		851-1100 1115	9-38803-12				
		1101-1350 1535	9-38803-16				
		1351-1600 1615	9-38803-17				
28	Running rail P 1300	(Application range see sheet 3)	9-31483-99	1	2	1	1
29	Gliding rail P 1225	lengths as with item 18	9-30140-99	1	2	1	1
30	Cover rail P 1226		9-30141-99	1	2	1	1
31	Cover for gliding rail		9-30142	-	-	-	-
32	Locking plates	SRH SRW					
		700-750 640-700	6 11 6 6 12				
		701-850	7 13 7 7 14				
		851-1350	8 15 8 8 16				
		1351-1600	10 19 10 10 20				
		640-700	7 12 7 7 14				
		701-850	8 14 8 8 16				
		851-1350	9 16 9 9 18				
		1351-1600	11 20 11 11 22				
		640-700	9 15 9 9 18				
		701-850	10 17 10 10 20				
		851-1350	11 19 11 11 22				
		1351-1600	13 23 13 13 26				
		640-700	11 18 11 11 22				
		701-850	12 20 12 12 24				
		851-1350	13 22 13 13 26				
		1351-1600	15 26 15 15 30				
		640-700	13 21 13 13 26				
		701-850	14 23 14 14 28				
		851-1350	15 25 15 15 30				
		1351-1600	17 29 17 17 34				
34	Positioning plate	According to profile system	2	4	2	2	4

The product guidelines of the profile manufacturers regarding construction, assembly, max. sash dimensions, max. sash weights and material qualities (e.g. longitudinal expansion) are to be observed.

The fastening screws specified are only a recommendation based on our experience.

The responsibility for the appropriate fastening of fitting components rests with the window / window door fabricator.

Description
Parallel slide and tilt fittings
GU-966/150 oZ
for PVC profile systems Groove position 9/13 mm

Release No.	Level	Released	Scale	Modification	Size
Ver. --	--	--	--	6	1
Mod. No. G25928	Draft	02.11.04	Zv	Drawing No.	Sheet
				0-44384-BL-0-GB	1/3

Replacement for 0-43923-BL

Locking of stay arm pin into glider with 4mm Allen key. In order to check secure engagement, pull firmly on stay arm.

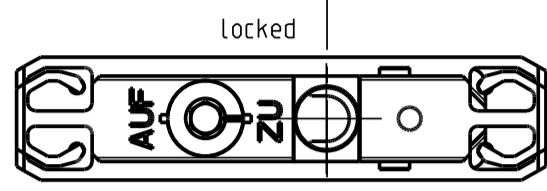
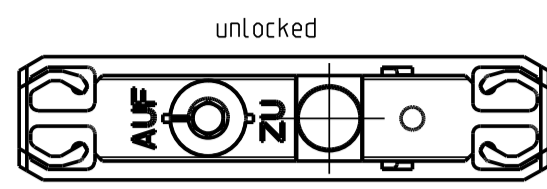
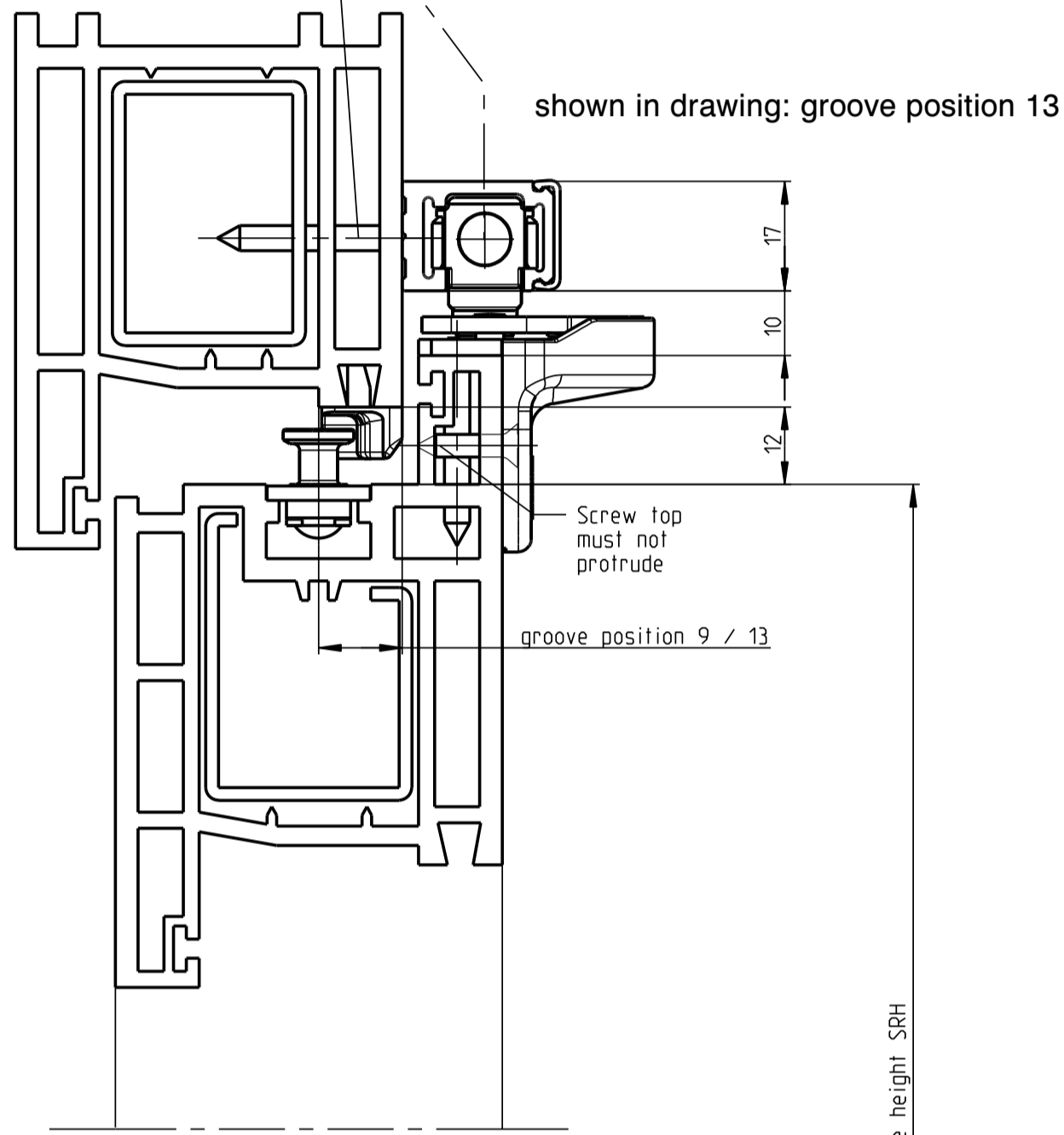
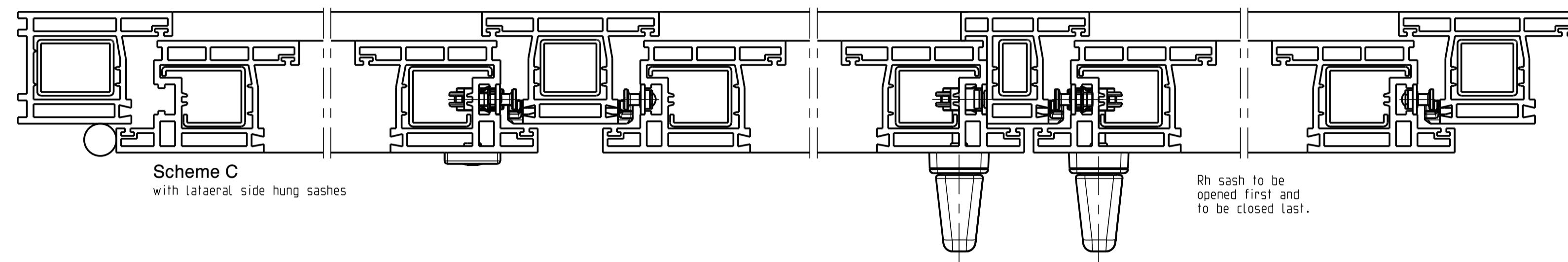
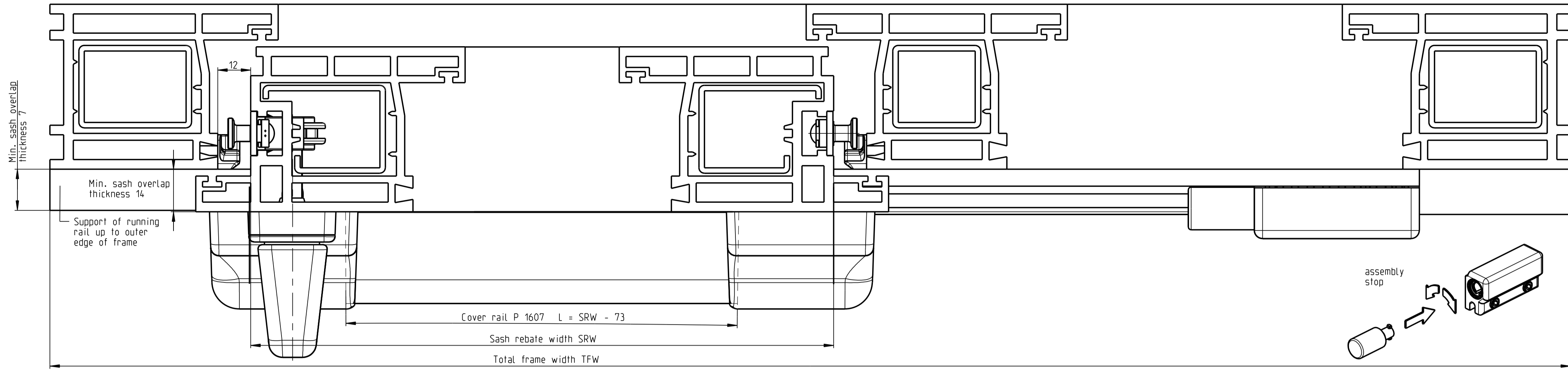


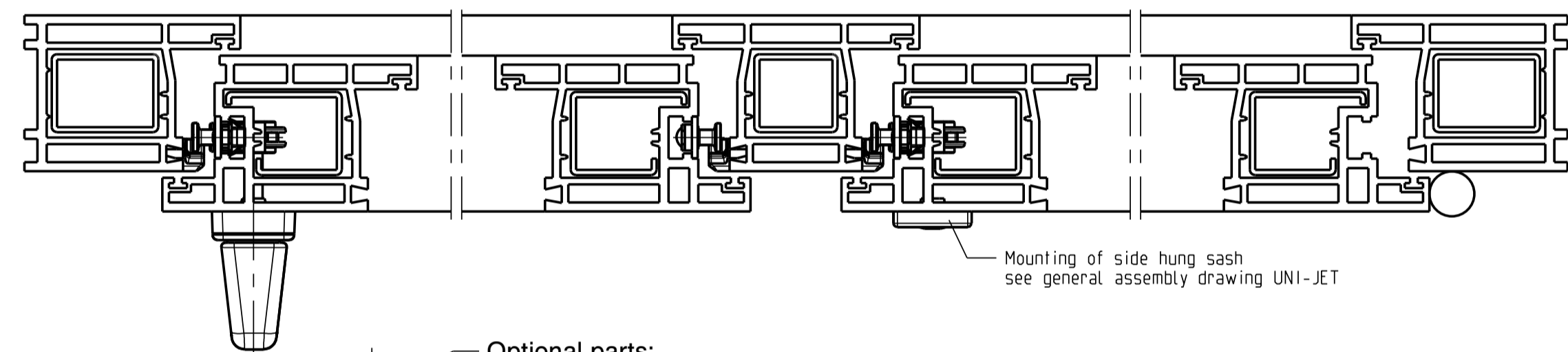
Illustration Pos. 6
countersunk screw 3.9x...



Scheme A
Sliding sash/ fixed glazing

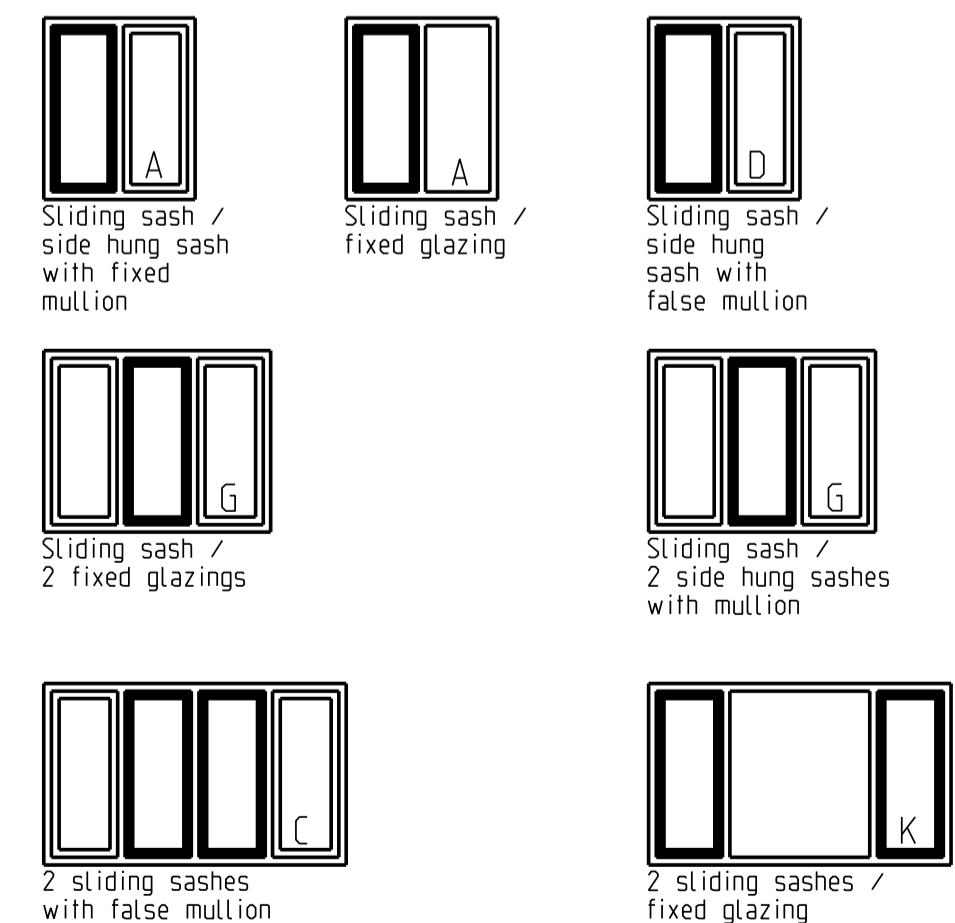
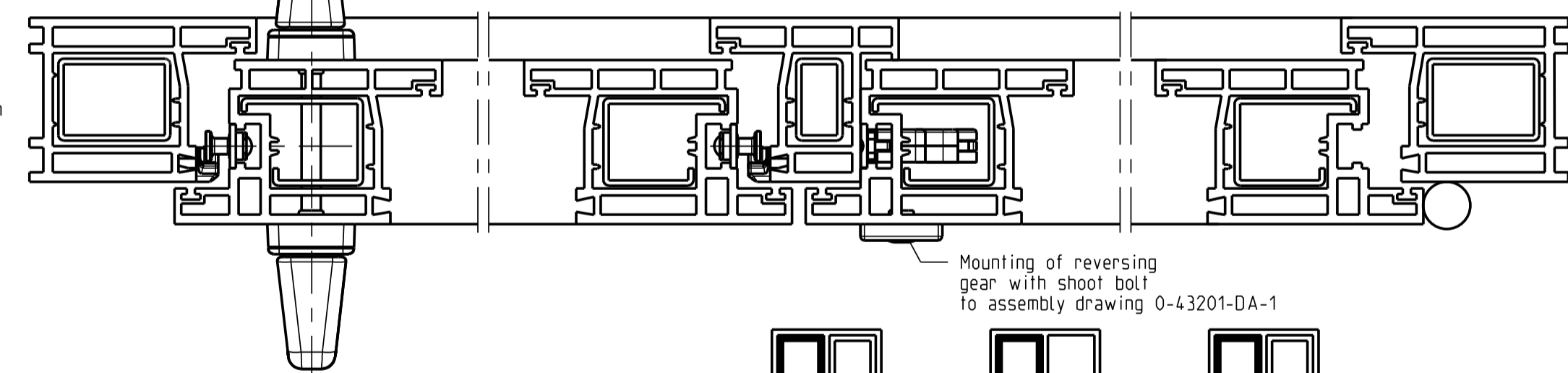


Scheme A
Sliding sash/ side hung sash with fixed mullion



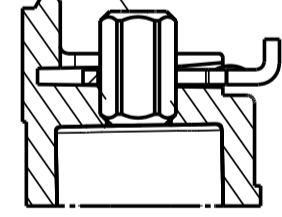
Optional parts:
Handle Dirigent, height of outside handle 20 mm
6-25223
height of outside handle 30 mm
6-28060

Scheme D
Sliding sash/ side hung sash with false mullion

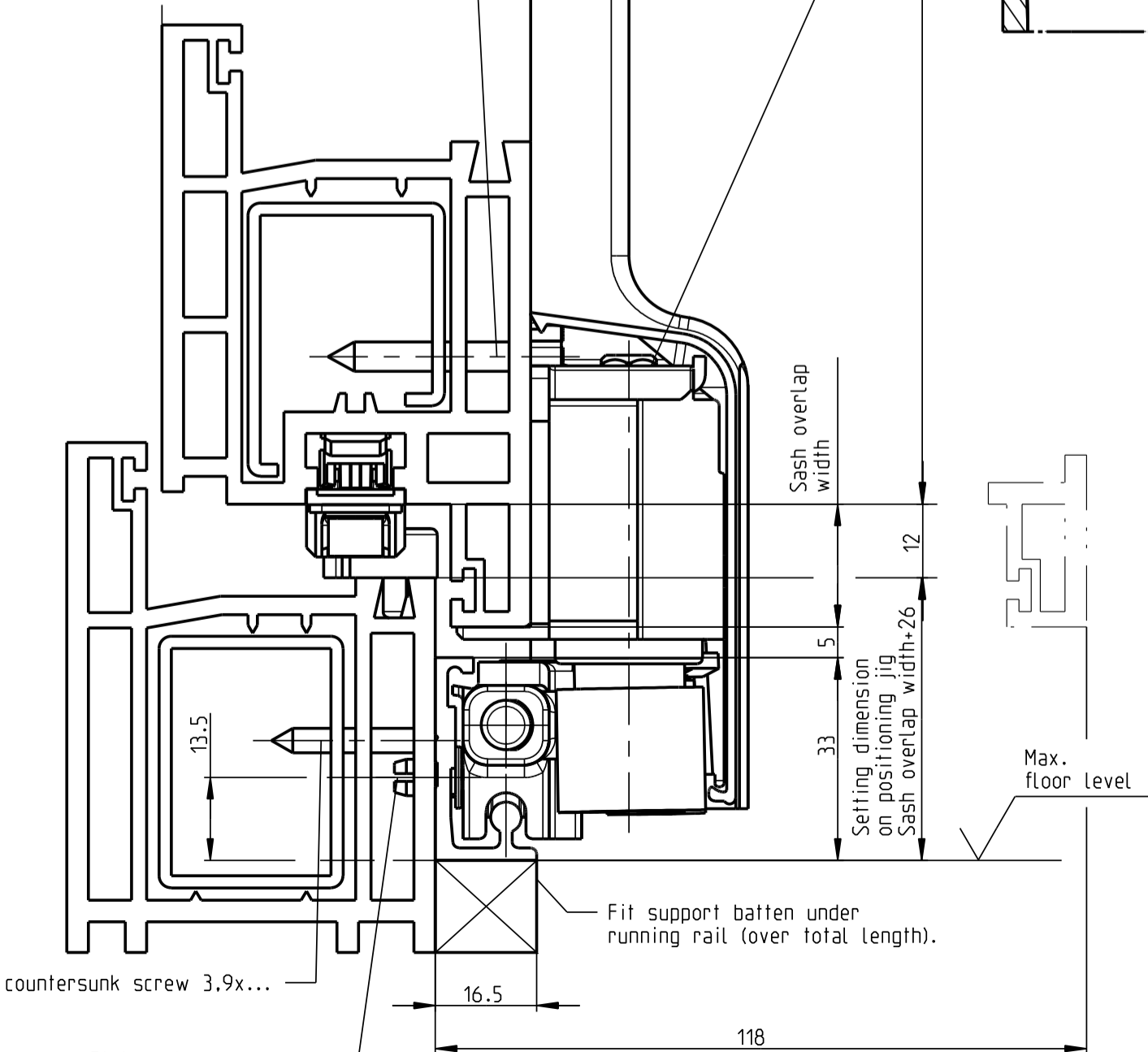


Sash rebate height SRH

Pull out catches for height adjustment on front and rear runner. Bring sash into vertical position using a 4mm Allen key. Push catches back in again.



dome-headed countersunk screw 4.8x...



Positioning jig 6-32490-99 for gear side /opposite to gear side and horizontal top (fill-turn product range)

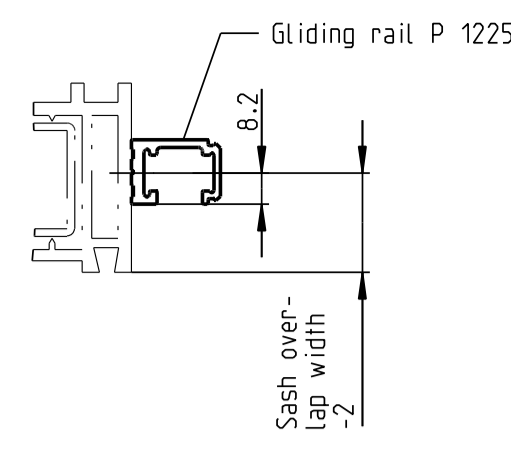
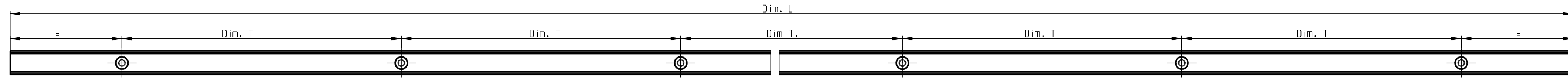
Size	SRH / SRW
02	Size 02 required for corner transmission
07	701 - 1600
08	1601 - 2100
09	2101 - 2350

Positioning jig 6-33007-99 for horizontal bottom

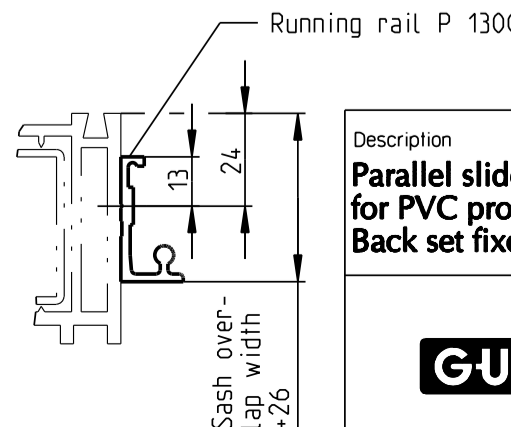
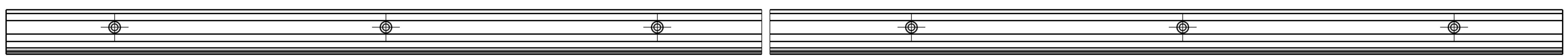
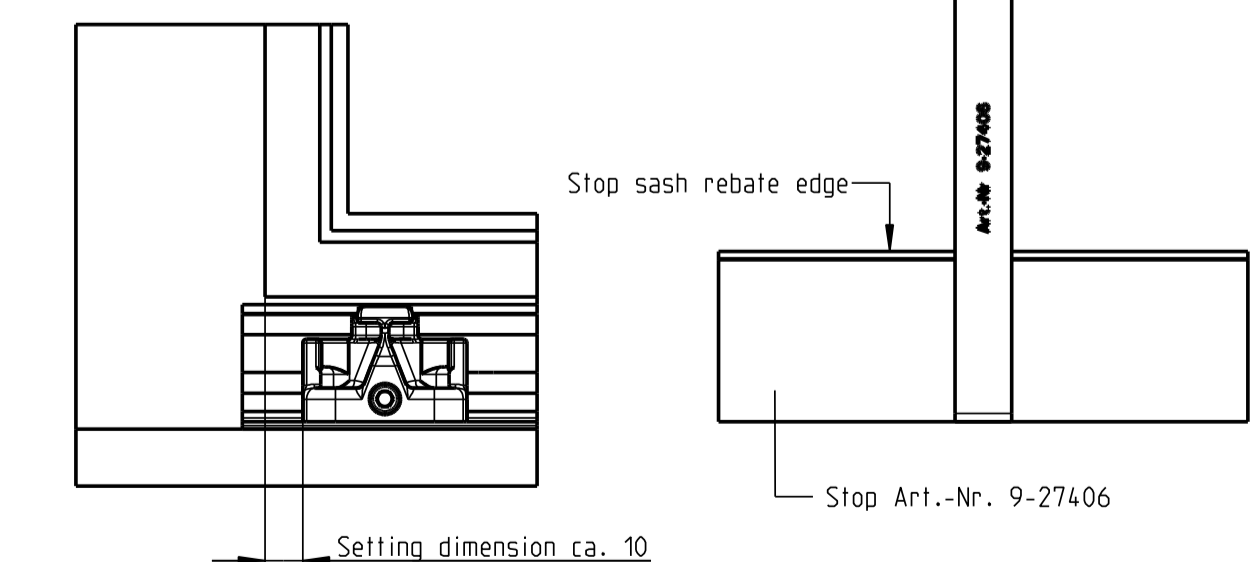
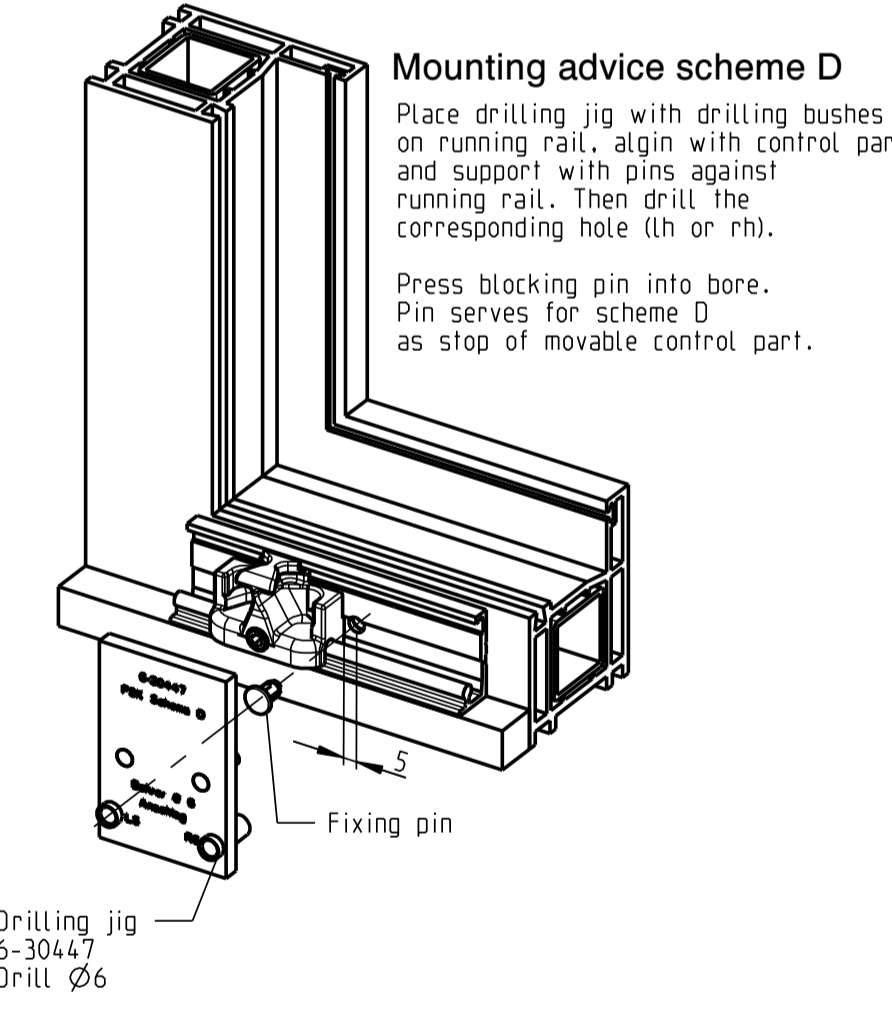
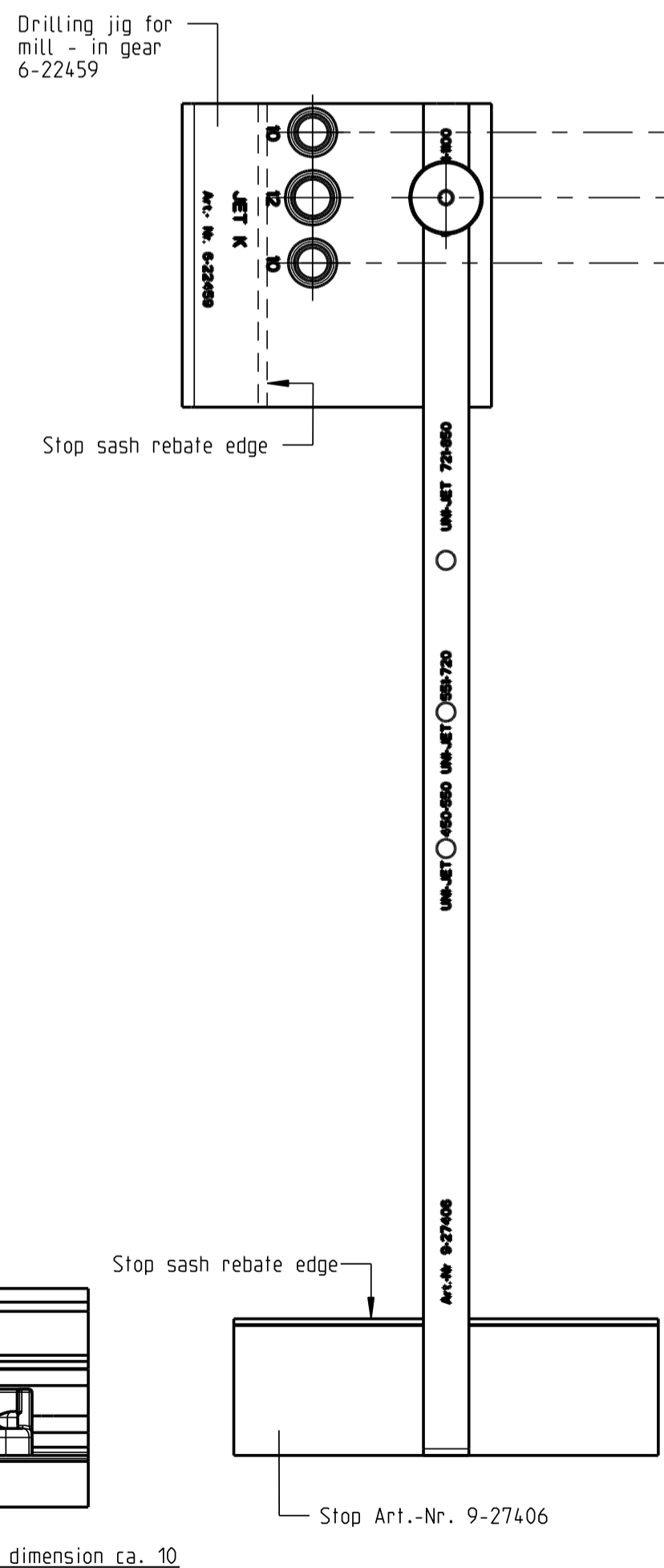
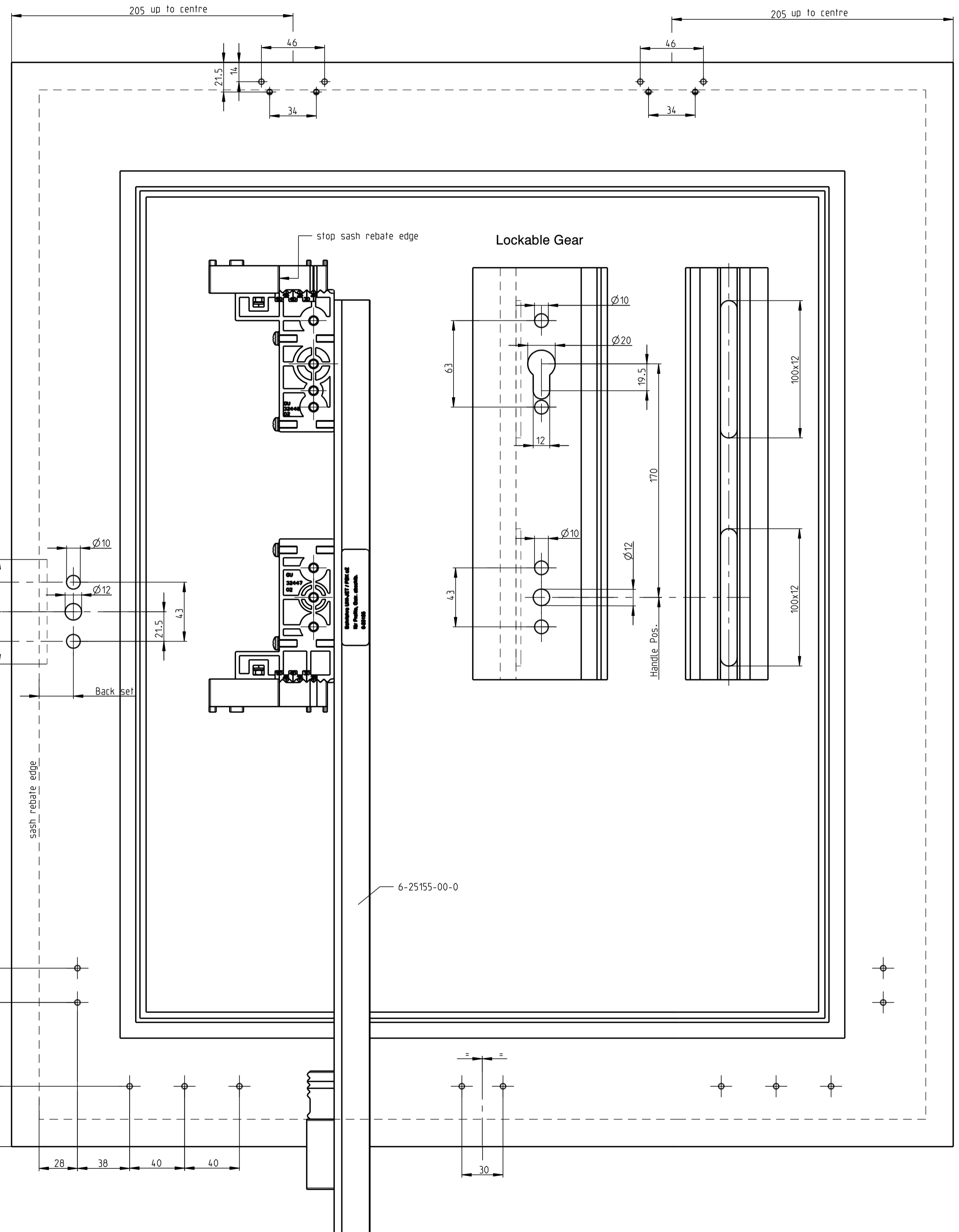
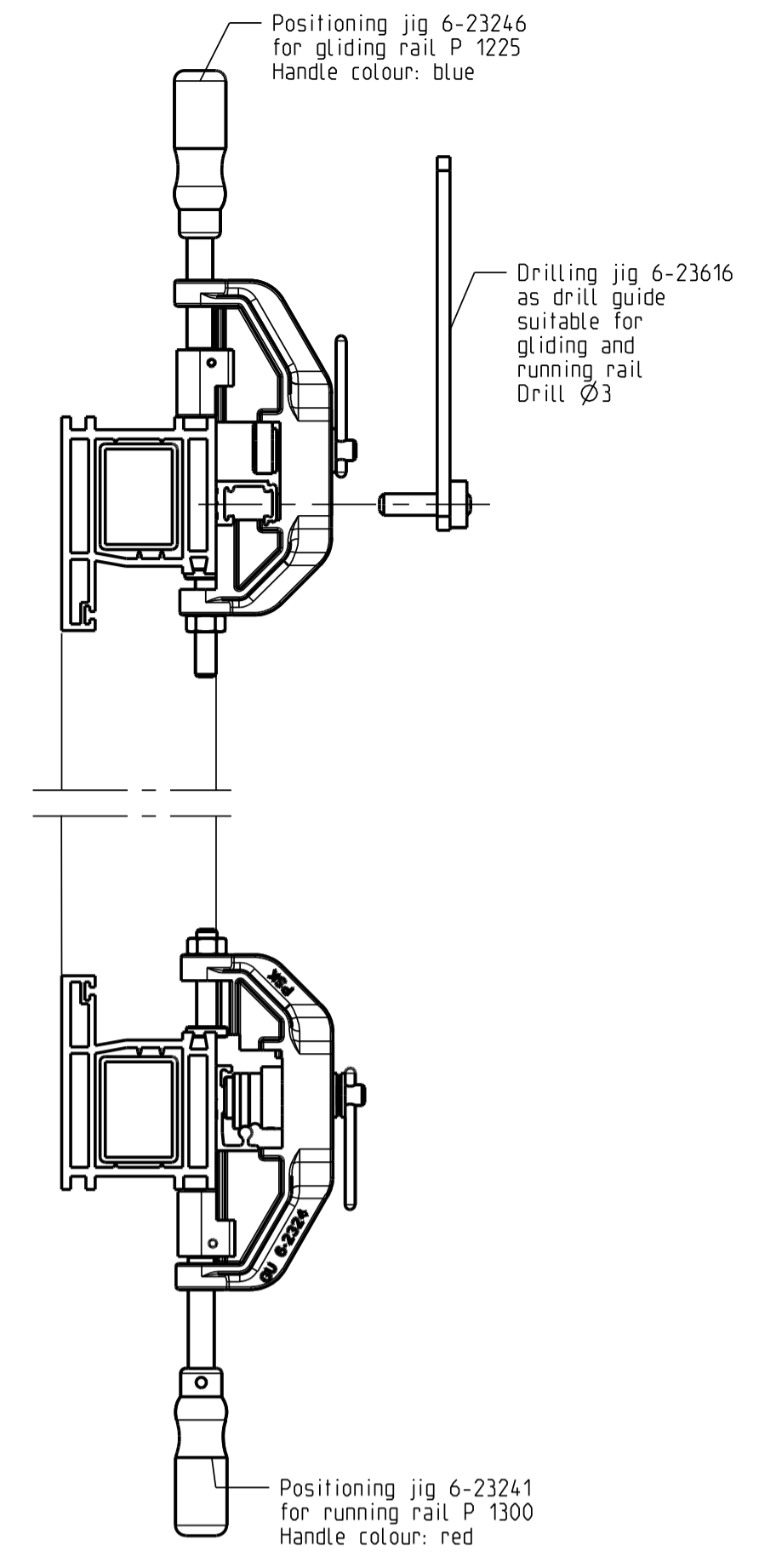
Size	Remark
01	Locking plate and positioning plate (42mm) for front/rear corner transmission
02	Locking plate and positioning plate (63mm) for front/rear corner transmission
03	Locking plate and positioning plate (55mm) for front/rear corner transmission
05	Locking plate from SRW 851 anti-lift security device

Description
Parallel slide and tilt fittings GU-966/150 oZ for PVC profile systems Groove position 9/13 mm Back set fixed gear 15 mm

GU	Release No.	Level	Released	Scale	Modification	Size
	Mod. No. G25928	Ver.	--	--	6	1
	Draft	04.11.04	Zv		Drawing No.	Sheet
	Replacement for 0-43923-BL				0-44384-BL-0-GB	2/3



Size	SRW	Dim. L	Number of screw holes	Division / Dim. T	Use
20	600-850	1960	10	200	Gliding-P 1225 and Running rail P 1300
25	851-1100	2460	13		
30	1101-1350	2960	15		
35	1351-1600	3460	18		
67	bearing length	6700	34		



Description
Parallel slide and tilt fittings GU-966/150 oZ for PVC profile systems Groove position 9/13 mm Back set fixed gear 15 mm

Release No.	Level	Released	Scale	Modification	Size
Mod. No. G25928	Ver. --	--	%	6	1
Replacement for --				Drawing No.	Sheet
				0-44384-BL-0-GB	3/3

GB

Proprietary rights apply in accordance with ISO 8666. 20/2018